



Beaufort County Public Works
Stormwater Infrastructure
Project Summary

Project Summary: Woodbridge Subdivision - Parkside Drive

Activity: Routine/Preventive Maintenance

Duration: 09/11/19

Narrative Description of Project:

Project improved 480 L.F. of drainage system. Cleaned out 480 L.F. of roadside ditch. Hyrdoseeded for erosion control.

2019-570A / Woodbridge Subdivision	Labor Hours	Labor Cost	Equipment Cost	Material Cost	Contractor Cost	Indirect Labor	Total Cost
AUDIT / Audit Project	1.0	\$21.79	\$0.00	\$0.00	\$0.00	\$0.00	\$21.79
HAUL / Hauling	10.0	\$229.90	\$141.60	\$49.50	\$0.00	\$0.00	\$421.00
RSDCL / Roadside Ditch - Cleanout	30.0	\$619.80	\$102.81	\$831.56	\$0.00	\$386.70	\$1,940.87
2019-570A / Woodbridge Subdivision Sub Total	41.0	\$871.49	\$244.41	\$881.06	\$0.00	\$386.70	\$2,383.66
Grand Total	41.0	\$871.49	\$244.41	\$881.06	\$0.00	\$386.70	\$2,383.66

Before

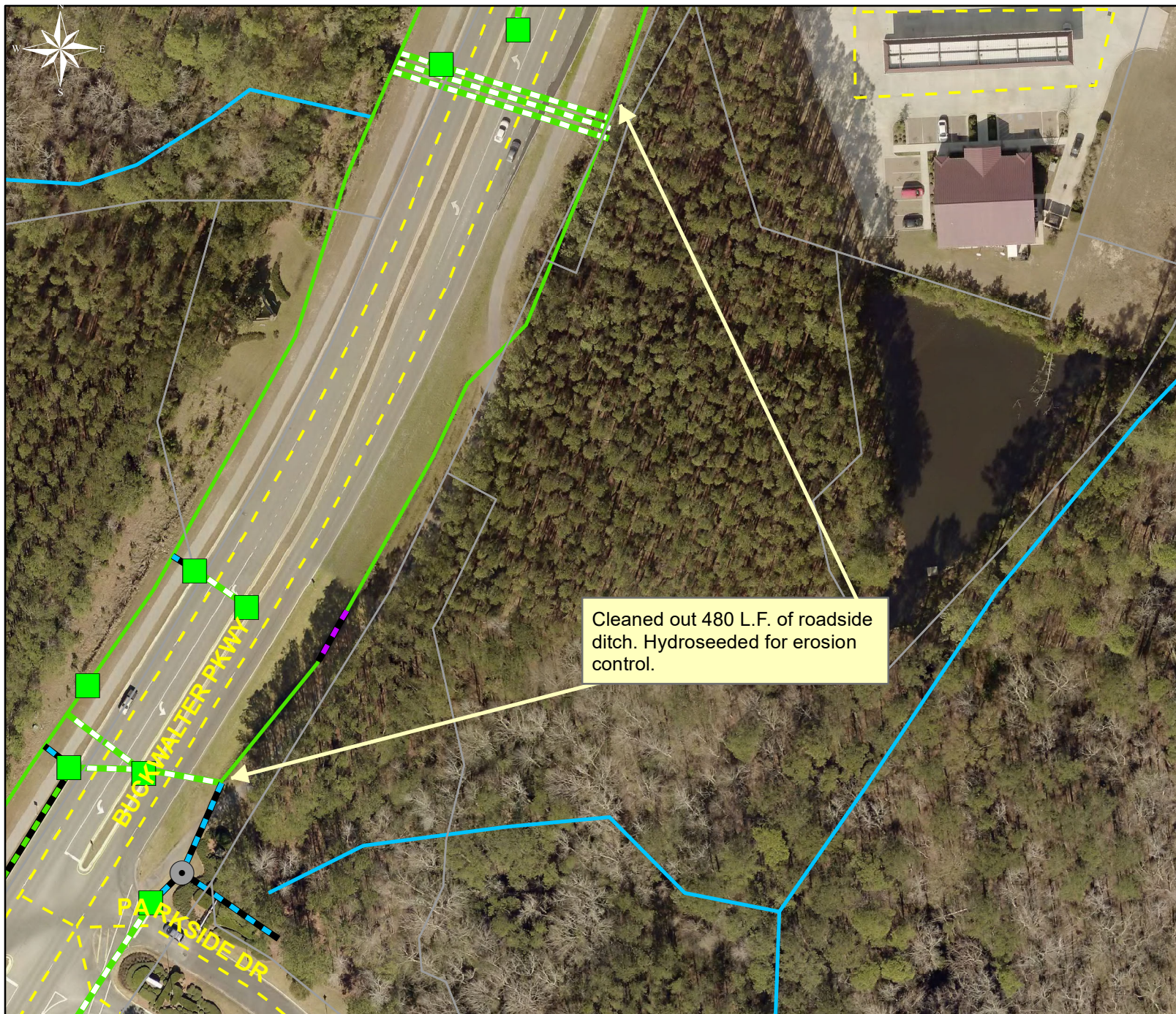
(No Picture Available)

During

(No Picture Available)

After





Project: Woodbridge
Subdivision -
Parkside Drive

Activity: Routine
Preventive
Maintenance

Project #:
2019-570A

Township/SW Dist:
Bluffton/4

Completed:
September 2019

Legend

Drainage Type

- Access Pipe
- Bleeder Pipe
- Channel Pipe
- Channel
- Stream
- Crossline Pipe
- Driveway Pipe
- Lateral
- Lateral Pipe
- River
- Road Pipe
- Roadside
- Roadside Pipe

0 20 40 80 120 160
Feet

1 inch = 98 feet

Prepared By: BC Stormwater Management Utility

Date Print: 011/20/19

File: C:\project summaries map\Woodbridge Subdivision-Parkside Drive_2019-570A